




Deficit irrigation in soybeans, the effect on grain yield and water productivity in temperate climates

Editor

Álvaro Otero 
Instituto Nacional de Investigación
Agropecuaria (INIA), Fisiología de
la planta - Nutrición, Salto,
Uruguay.

Correspondence

Received 06 Jan 2021

Accepted 02 Aug 2021

Published 01 Oct 2021

Citation

Hayashi R, Dogliotti S. Deficit irrigation in soybeans, the effect on grain yield and water productivity in temperate climates. *Agrocienca Uruguay* [Internet]. 2021 [cited dd mmm yyyy];25(2):e500. Available from: <http://agrociencauruguay.uy/ojs/index.php/agrocienca/article/view/500>.

Riego deficitario en soja, efecto sobre el rendimiento y la productividad del agua en clima templado

Irrigação deficitária em soja, efeito sobre a produção de grãos e produtividade da água em clima temperado

Hayashi, R. ¹; Dogliotti, S. ²

¹Universidad de la República, Facultad de Agronomía, Departamento de Suelos y Aguas, Montevideo, Uruguay

²Universidad de la República, Facultad de Agronomía, Departamento de Producción Vegetal, Montevideo, Uruguay



Abstract

In regions with a temperate and humid climate, deficit irrigation improves the profitability and sustainability of production systems, when properly implemented. It is necessary to generate knowledge on the response of crops to deficit irrigation. Aiming to improve the design and management of irrigation equipment used in soybean cultivation in Uruguay, an experiment was proposed where three maximum depths of irrigation replacement (3 mm, 6 mm and 9 mm day⁻¹) and non-irrigated control were evaluated. A randomized complete block design was used, with four treatments and four replications. Drip irrigation was applied, which allowed a good adjustment of the different irrigation depths used and reduced the experimental area. Non-irrigated and 3 mm suffered water stress from V10 to grain filling, producing lower yields. The 6 mm treatment yielded the same as the 9 mm in Year 1, but lower in Year 2. This study indicates that irrigation is necessary when rainfall is less than the average for the region or its distribution is inadequate. The 9 mm treatment showed the highest water productivity (WUE: 0.86 Kg m⁻³) and irrigation (IWUE: 0.54 Kg m⁻³), with less use of rainfall, compared to 6mm.

Keywords: glycine max (L.) Merr; temperate environment, water use efficiency

Resumen

En regiones de clima templado y húmedo los riegos deficitarios mejoran la rentabilidad y la sostenibilidad de los sistemas productivos, cuando son correctamente implementados. Con el objetivo de mejorar el diseño y el manejo de los equipos de riego utilizados en el cultivo de soja en Uruguay, se planteó un ensayo donde se evaluaron tres láminas máximas de reposición (3 mm, 6 mm y 9 mm día⁻¹) y un secano. Se utilizó un diseño de bloques completos al azar con cuatro tratamientos y cuatro repeticiones. El riego fue aplicado por riego por goteo, que permite un buen ajuste de las diferentes láminas utilizadas y reduce el área experimental. El secano y 3 mm, desde V10 hasta llenado de grano, sufrieron estrés hídrico, con menores rendimientos. El tratamiento de 6 mm rindió igual que 9 mm en el Año 1, pero en el Año 2 fue menor. Este estudio indica que el riego es necesario cuando las precipitaciones son menores al promedio de la zona o la distribución de las mismas es inadecuada. El tratamiento de 9 mm mostró mayor productividad del agua consumida (EUAC: 0.86 Kg m⁻³) y del agua de riego (EUAR: 0,54 Kg m⁻³), con menor aprovechamiento de las precipitaciones, respecto a 6 mm.

Palabras clave: glycine max (L) Merr; clima templado; productividad del agua

Resumo

Em regiões de clima temperado e úmido, a produção agrícola depende da distribuição e da quantidade de chuvas durante o ciclo da cultura. A irrigação deficitária melhora a rentabilidade e sustentabilidade dos sistemas de produção, quando devidamente implementada. É necessário gerar conhecimento sobre a resposta das lavouras ao déficit de irrigação. Com o objetivo de melhorar o projeto e o manejo dos equipamentos de irrigação utilizados no cultivo de soja no Uruguai, foi proposto um ensaio onde foram avaliadas três lâminas máximas de reposição de irrigação (3 mm, 6 mm e 9 mm no dia-1) e um control sem irrigação. Foi utilizado um projeto de bloco completo randomizado com quatro tratamentos e quatro repetições. A irrigação foi aplicada por irrigação por gotejamento, o que permite um bom ajuste das diferentes lâminas utilizadas e reduz a área experimental. O control e a lâmina de 3 mm, da fase V10 até o enchimento de grãos sofreu estresse hídrico dando menores rendimentos. A baixa pluviosidade e a Água Disponível do solo foram insuficientes, bem como a lâmina de irrigação de 3 mm. O tratamento de 6 mm rendeu o mesmo que 9 mm no Ano 1, mas no Ano 2 foi menor. Este estudo indica que a irrigação é necessária quando a precipitação é inferior à média da área ou a sua distribuição é inadequada. O tratamento de 9 mm apresentou maior produtividade da água consumida (EUAC: 0,86 Kg m⁻³) e da água de irrigação (EUAR: 0,54 Kg m⁻³), com menor uso de chuva, em comparação com 6 mm.

Palavras-chave: glycine max (L) Merr; clima temperado; eficiência do uso da água



1. Introduction

Climate change is modifying the rainfall distribution in some regions, with an increase in extreme events⁽¹⁾, being less effective in meeting the crop water demand. Agriculture is highly dependent on climatic conditions, mainly on rainfall, causing great variability in the yields and producers' income. Supplemental irrigation increases and stabilizes production, mainly in years with low rainfall⁽²⁾. However, producers do not invest in irrigation in conditions of humid temperate climate due to production costs and fluctuating prices of soybean and other crops⁽³⁾. In addition, the energetic cost to extract, distribute and apply irrigation water requires evaluating different strategies for optimization⁽⁴⁾. According to Izquier⁽⁵⁾, any strategy that minimizes electricity costs will be accepted, either with tools that optimize the design of water distribution and pumping stations, or by helping the management of the irrigation system.

Limited or deficit irrigation is a more profitable and more environmentally sustainable strategy that improves water productivity, and stabilizes and increases the yield of various crops⁽⁶⁾, with less water use⁽⁷⁾⁽⁸⁾. However, the effectiveness of deficit irrigation to improve production and reduce irrigation costs depends on the availability of information on the response of crop yields to water stress.

Some deficit irrigation strategies are based on meeting the demand during the most sensitive periods of the crop and irrigating in a deficit way in less sensitive stages, Controlled Deficit Irrigation (CDI)⁽⁹⁾⁽¹⁰⁾; others provide a percentage of ET_c throughout the crop cycle, Sustained Deficit Irrigation (SDI)⁽¹⁾⁽³⁾⁽¹¹⁾⁽¹²⁾, or combinations of both strategies⁽¹³⁾⁽¹⁴⁾⁽¹⁵⁾. These studies report on the response of soybean crops to deficit irrigations; however, they do not indicate the irrigation depth for the design of the irrigation equipment, for each strategy.

Irrigation equipment that fully covers the water requirement of the crop requires higher investment and operating costs. Equipment designed based on average water requirements lower than that of the crop, with lower capacity and irrigation depth applied has the risk of not meeting the demand and could affect the crop yield⁽¹⁶⁾. In arid climate condi-

tions, this probably occurs, however in humid climates with rainfall in the growing season, it will depend on the rainfall characteristics and their timely occurrence. Furthermore, when irrigation is applied at rates below the ET_c, the crop uses the soil water reserve to compensate for the deficit.

It is possible to meet the crop demand with equipment that applies irrigation depths below the ET_c, if the soil stores enough water and rainfall timely recharges the soil, in this way transpiration will not be affected⁽⁸⁾. For this, soils must have good water storage capacity, which may not happen in Uruguay's conditions⁽¹⁷⁾. Therefore, it is necessary to evaluate the effect of different irrigation depths on the response of the soybean crop that allow defining the dimensioning or design of the irrigation equipment.

Soybean is the main summer crop in Uruguay and it is mostly rainfed; however, the yield gap compared to those with supplementary irrigation is very wide. Irrigation can duplicate the yields in years with water deficit and in years with abundant rainfall in the growing season, it may increase the yield 30% above the rainfed crops⁽¹⁸⁾. The average soybean yields of the last 15 years in Uruguay are around 2.0 t ha⁻¹ in commercial rainfed crops. With irrigation, the data of the last 5 years indicate an average of 3.4 t ha⁻¹ with a yield increase between 18 to 137% compared to rainfed⁽¹⁸⁾⁽¹⁹⁾⁽²⁰⁾⁽²¹⁾⁽²²⁾. In the United States, one of the main soybeans producing countries, the average yields vary between 2.9 and 3.9 t ha⁻¹ in non-irrigated and irrigated commercial crops, respectively, while at the experimental level the maximum yields are between 6.0 and 7.0 t ha⁻¹⁽²³⁾.

The rainfall regime in this region does not allow a constant supply of water⁽²⁴⁾, generating conditions of water deficit during the crop growth, limiting potential and stable yields⁽²⁵⁾.

This study aims to evaluate the use of different maximum daily irrigation depths on soybean production in southern Uruguay. The different irrigation depths applied will determine a differential use of rainfall, and lower irrigation water requirements, affecting irrigation operating costs. Each irrigation depth simulates the effect of irrigation equipment designed to apply said depths. Applying irrigation in this way allows covering the water requirements of the early



stages, which are lower, with irrigation or rainfall. As the crop grows, along with its water consumption, the smaller irrigation depths will stop meeting the demand and the crop will make use of the limited reserve of the soil. As of that moment, different levels of water depletion will occur even below the threshold. Upon reaching the critical period and depending on rainfall, the different treatments will have different moisture content in the soil, generating different levels of water stress in the plant.

This study focuses on improving the design and management of irrigation equipment used in soybean, improving the efficiency of water use in soybean production in Uruguay.

2. Material and methods

2.1 Experimental site

Soybean cultivation was established in the experimental field of the Agronomy School, South Regional Center, Canelones, Uruguay (34°37'S and 56°13'W), in the 2014/15 and 2015/16 seasons (Year 1 and Year 2, respectively). The experiment was carried out in a Typic Argiudoll⁽²⁶⁾ or Typic Eutric Brunisol Lac. soil, from the Tala Rodríguez Soil Unit⁽²⁷⁾. Table 1 presents information on its hydric properties.

Table 1. Physical and hydric characteristics of the test soil

Depth (cm)	FC vol%	PWP vol%	BD gr cm ⁻³	AW mm horiz ⁻¹
0-20	38.9	22.5	1.25	32.7
20-40	43.6	25.1	1.43	37.0
40-60	38.6	21.4	1.43	34.4
60-80	38.4	21.4	1.40	33.9
Total water (mm)	319	181		138.0

FC: Field Capacity; PWP: Permanent Wilting Point; BD: Bulk Density; AW: Available Water; vol%: volumetric percent

The infiltration rate measured with the double ring infiltrometer was 8.8 mm h⁻¹.

A root depth of 0.80 m was defined because the soil does not physically impede soybean crops to explore. Dardanelli and others⁽²⁸⁾ indicate that the maximum absorption is at 180 cm in deep soils without physical impediments. The soils in the experiment have a maximum explorable depth of 80 to 90 cm.

This area is classified as having a moderate temperate climate⁽²⁹⁾ with no dry season and hot summer. The average annual rainfall is 1200 mm with high interannual variability and annual irregularity. The average summer temperature varies between 18 and 23 °C, while the average radiation varies between 400 and 580 cal cm⁻² day⁻¹, with an average humidity of 72%. The meteorological variables of interest during the soybean growing season will be presented in the climatic characterization of the experiment.

2.2 Experimental design

The treatments were: Rainfed: only rainfall; 3 mm: maximum depth 3 mm day⁻¹; 6 mm: maximum depth 6 mm day⁻¹, and 9 mm: maximum depth 9 mm day⁻¹. Each irrigation depth indicates the maximum daily replacement capacity with irrigation.

A randomized complete block design with four replications was used for the experiment. The plots were 12×6 m in size, without empty spaces, to avoid edge effects that generate different microclimatic conditions within the experiment (oasis effect). The total experimental area was of 1152 m².

2.3 Crop management

The soybean cultivars used were 6262 IPRO (medium cycle), Don Mario in Year 1 and 5258 Nidera Semillas (short cycle) in Year 2. The no-till sowing dates were December 11, 2014, and November 23, 2015.

Before sowing, seeds were inoculated with strains of *Bradyrhizobium elkanii* plus Bioprotector ADD-IT BLUE (commercial product, Biopack LIKUIQ, from Lage y Cia. SA) at the dose recommended by the manufacturer.

The sowing density was 380 thousand plants ha⁻¹, 0.38 m between rows and approximately 15 plants per linear meter. Each plot had 16 rows of 12 m in length.



To avoid nutritional restrictions, the sowing was fertilized with 120 kg ha⁻¹ of P-PO₄, using triple calcium superphosphate (0-46-46-0) as fertilizer. Herbicide was applied pre and post-sowing to eliminate competition for space and nutrients.

2.4 Irrigation management

Drip irrigation was used to precisely apply the different irrigation depths. The equipment allowed to independently manage the irrigation times of each treatment. The lateral drip holders were placed every 0.50 m, with 4 l h⁻¹ drippers every 1.0 m arranged in a staggered pattern to improve water distribution. The application rate was 8 mm h⁻¹, below the infiltration rate of the soil. The uniformity coefficient (UC) of the equipment⁽³⁰⁾ was higher than 90%.

Irrigation was applied every two or three days, replacing the accumulated depths from the previous days, corresponding to each treatment. For example, if the sum of the irrigation needs of the crop was 13 mm in the two days before irrigation, 3 mm received 6 mm, 6 mm received 12 mm, and 9 mm received 13 mm.

To define the moment and the amount of water to apply, a daily water balance was made, according to FAO 56⁽³¹⁾. The water balance began with the soil at Field Capacity, regarding the pre-sowing precipitation (PP) or complementing with sprinkler irrigation. Climatic data were taken from the meteorological station of the INIA Las Brujas Experimental Station, located 12 km from the experiment. The PP was measured locally with a rain gauge in the experimental site, placed in compliance with standardization norms.

The adjusted evapotranspiration (ET_{c adj}) was calculated daily (Eq. 1). The cultivation coefficients (K_c) used are those recommended by FAO⁽³¹⁾ since local information is not available.

$$ETc\ adj = ETo * Ks * Kc \quad Eq. 1$$

Where:

ET_{c adj}: Adjusted ET_c (mm day⁻¹)

ETo: Reference crop evapotranspiration (Penman-Monteith modified by FAO⁽³¹⁾)

K_s: stress coefficient, maximum value 1⁽³¹⁾

$$Ks = \frac{TAW - Dr}{(1-p)TAW} \quad Eq. 2$$

Where:

Dr: Moisture depletion in root zone (mm)

TAW: Total available water in root zone (mm)

p: Fraction of the TAW that the crop extracts without suffering water stress (irrigation threshold)

When irrigation or PP do not cover the demand of the crop, a moisture deficit (Dr) accumulates in the soil. If the deficit exceeds the threshold (K_s < 1), the crop adjusts its water consumption due to stomatal adjustment processes. The consumption reduction is given by the relationship between the cumulative deficit and the readily available water (RAW = (1-p) * TAW; Eq. 2). If K_s = 1, there is no adjustment and the ET_{c adj} will be equal to the ET_c; if the K_s < 1, the ET_{c adj} will be lower than the ET_c⁽³¹⁾.

Tabulated "p" values of the FAO manual 56⁽³¹⁾ were used and corrected by ET_c, according to the adjustment equation, p = p_{table} + 0.04 × (5 - ET_c). For soybean, "p" is 0.50, and it was adjusted when ET_c exceeded 5 mm day⁻¹. The value of "p" estimates the RAW, which is the minimum amount of water in the soil for the crop to be in hydric comfort.

To estimate the PP_{eff.}, the mm necessary to cover Dr at the time of the PP were considered effective. The water content between saturation and FC in the first 20 cm of the soil is 28 mm, for this soil. If the PP exceeded the soil moisture deficit by 28 mm, the surface horizon was considered to be saturated. If this happened, 48 to 72 hours were allowed for the natural drainage to return the soil moisture to FC. To corroborate the soil humidity, a drill field control was carried out. PP lower than 20% of the ETo was discarded⁽³¹⁾.

Irrigation requirements were estimated by correcting the ET_{c adj} by the equipment UC and by the application efficiency (A_e). Irrigation management with reduced depth and application intensity lower than the infiltration rate of the soil did not generate surface runoff or detectable deep percolation, retaining



the applied water in the root depth, therefore, the A_e was considered to be close to 100%.

2.5 Measurements

2.5.1 Soil moisture

Soil moisture was measured two to three times a week. For this, in the central testing area, 1-meter-deep aluminum access tubes were placed in two of the four replications, for a CPN neutron probe (model 503-DR Hydrprobe, Campell Pacific Nuclear Corp., CA, USA) to measure in four depths: 0 to 20 cm, 20 to 40 cm, 40 to 60 cm, and 60 to 80 cm. The probe was calibrated for each soil horizon against the humidity measurements obtained with the gravimetric method, following the methodology of Haverkamp and others⁽³²⁾, and Puppo and others⁽³³⁾. The sampling included moisture contents that cover the range of moisture that can be measured in the test, achieving a good calibration adjustment in all horizons.

2.5.2 Crop development

Based on plant observation, the phenology of the crop was evaluated using the Fehr and others scale⁽³⁴⁾; Fehr and Caviness⁽³⁵⁾.

One of the key stages in defining soybean crop yield is the critical period (CP), which occurs from the beginning of R4 to R6, inclusive.

To evaluate the aboveground biomass, the aboveground part of the plants was extracted from one linear meter per plot every 15 or 20 days. Samples were not extracted from the six central rows so as not to alter the sowing density, since the final crop yield was evaluated in the central rows. For the final aboveground biomass, sampling was carried out in stages R5.5, before the beginning of leaf fall. The samples were dried in an oven at 60 °C until constant weight.

2.5.3 Yield

The grain yield was evaluated by harvesting three subsamples of 2 m² each, in the six central rows, reaching a harvest area of 6 m² per plot. Grain yield, weight of 1000 grains and number of grains per square meter were measured. The harvest index (HI) was estimated as: dry grain weight/total dry matter. Harvest grain moisture was evaluated using a grain moisture analyzer (Multi-grain, Dickey-

John). The grain weight was corrected to a humidity of 14%.

The harvest dates were May 7, 2015, and April 22, 2016, for Years 1 and 2, respectively.

2.6 Productivity indicators of water use by crops

To evaluate the different irrigation strategies proposed, different indicators of water use efficiency were estimated. The combination of indicators can inform about the most appropriate management strategies⁽³⁶⁾. The consumed water use efficiency (CWUE) is one of the measures commonly used to evaluate management strategies. However, the CWUE does not discriminate the irrigation contribution, and according to Howell⁽³⁷⁾, other expressions can discriminate the irrigation role, such as the supplementary water use efficiency of evapotranspired by irrigated treatments with respect to rainfed (SWUE) and the irrigation water use efficiency (IWUE) (Eq. 4 and 5).

$$CWUE(\text{kg m}^{-3}) = \frac{\text{Yield} (\text{kg ha}^{-1})}{ETc_{\text{adj}} (\text{m}^3 \text{ha}^{-1})} \quad \text{Eq. 3}$$

$$SWUE = (\text{Yield}_t - \text{Yield}_0) / (ETc_t - ETc_0) \quad \text{Eq. 4}$$

$$IWUE = (\text{Yield}_t - \text{Yield}_0) / I \quad \text{Eq. 5}$$

Where:

Yield_t: Yield irrigation treatment (Kg ha⁻¹)

Yield₀: Yield rainfed (Kg ha⁻¹)

ETc_t: ETc adj irrigation treatment (m³)

ETc₀: ETc rainfed (m³)

I: Irrigation (mm)

To evaluate the effect of deficit irrigation on yield, a deficit irrigation stress index (DISI) was calculated⁽³⁸⁾. It relates the yield obtained in each treatment (Yield_t) with the yield of the most irrigated one (Yield_r).

$$DISI = (\text{Yield}_r - \text{Yield}_t) / \text{Yield}_r \quad \text{Eq. 6}$$

2.7 Statistical analysis

Data were analyzed using the statistical package INFOSTAT⁽³⁹⁾. Means were separated using Fisher's test ($p \leq 0.05$ between means) to detect differences between treatments for grain yield, weight of



1000 grains, grains per m² and biomass. The relationship between grain yield and the amount of water applied by irrigation was evaluated using a regression fit.

2.8 Transparency of data

Available data: The entire data set that supports the results of this study was published in the article itself.

3. Results

3.1 Climatic characterization

The atmospheric demand (ET_o) was higher than the ET_c in both years, with a 50% probability of occurrence for a series of 40 years, mainly during the CP

(Table 2). In the CP (February and March) the PP was lower than the PP value with a 50% probability of occurrence in both years. In Year 1, due to late sowing dates, the CP was between March 12 and April 10. In Year 2 it was between January 31 and March 1. It is worth mentioning that before the CP, in the phenological stages of flowering and pod formation, the PP was the lowest of the crop cycle, 27 and 11 mm for Year 1 and 2, respectively.

In Year 2, PP occurred before the end of the crop cycle and continued for several days. This situation did not allow immediate harvest, because it was impossible to enter the crop with saturated soil and because the PP continued for 20 days. The yield was affected due to fallen plants and the loss of harvestable grains.

Regarding solar radiation during CP, the values were 5% higher than the average.

Table 2. Monthly average potential evapotranspiration (ET_o), cumulative PP and solar radiation for Year 1, Year 2 and value with 50% probability of occurrence in 40 years (1980-2020)

	Evapotranspiration (ET _o) (mm month ⁻¹)			Monthly PP (mm month ⁻¹)			Solar Radiation (cal cm ⁻² day)		
	1980-2020	Year 1	Year 2	1980-2020	Year 1	Year 2	1980-2020	Year 1	Year 2
October	108	128	108	96	150	63	440	445	404
November	141	146	146	91	187	73	529	525	524
December	173	174	177	76	66	131	581	570	580
January	179	167	188	83	106	11	581	537	583
February	136	153	158*	92	27	82*	506	538	523*
March	111	121*	103	87	72*	93	405	425*	350
April	63	87	57	86	30	252	292	343	215
May	36	47	34	73	21	56	216	220	175

* Critical period

Both years presented the maximum ET_c in February (6.27- and 6.50-mm d⁻¹), due to late sowing dates. Year 2 also presented high ET_c in January (6.21 mm day⁻¹) because that year the crop was sown in mid-November and reached the maximum K_c in the last week of January.

Table 3. Daily average crop evapotranspiration (ET_c) in mm d⁻¹ for each year of evaluation and average of the two years

ET _c mm d ⁻¹	Year 1	Year 2	Average 2 years
December	2.35	3.01	2.68
January	3.95	6.21	5.08
February	6.27	6.51	6.39
March	4.50	3.40	3.95
April	2.57	1.11	1.84



3.2. Grain yield, production of aboveground biomass and harvest index

The results indicate that irrigation affected grain yield in both evaluation years. The response to the different treatments depended on the specific conditions of each year, mainly the quantity and distribution of PP. The yield of the 9 mm treatment was significantly higher than the other treatments (except for the 6 mm in year 1), and the rainfed presented the lowest yield. The water deficit conditions caused a significant yield reduction in the rainfed and 3 mm, compared to 9 mm (Table 4).

The 1000-grain-weight yield component did not differ statistically between treatments in Year 1, and it was higher in 9 and 6 mm, in Year 2, which were statistically different from 3 mm and rainfed (Table 4). The number of grains per square meter was higher in 6 and 9 mm in both years, with a significant difference between them in Year 2; and the 3 mm and rainfed treatments presented a lower number of grains per square meter, differing from all the treatments.

Table 4. Grain yield, weight of 1000 grains and number of grains per m², for the two years of evaluation. Grain moisture corrected to 14%

	Yield Kg ha ⁻¹		Weight 1000 grains gr		N° grains Grains m ²		Yield 2 years Kg ha ⁻¹
	Year 1	Year 2	Year 1	Year 2	Year 1	Year 2	Average
Rainfed	3454 c	2135 b	200 ab	192 b	1978 c	1455 d	2795 c
3 mm	4575 b	2779 b	200 ab	194 b	2541 b	1607 c	3678 b
6 mm	5652 a	2882 b	208 a	201 a	3369 a	2389 b	4267 b
9 mm	5973 a	4117 a	193 b	207 a	3559 a	3065 a	5045 a

Means with the same letter are not significantly different ($p > 0.05$).

The aboveground biomass production was higher in 6 and 9 mm, and higher in Year 1 compared to Year 2. On average, the 6- and 9-mm treatments achieved 13359 and 15602 kg DM ha⁻¹ of aboveground biomass and the rainfed, approximately half,

6945 Kg DM ha⁻¹. The harvest index, which relates the harvestable yield (grain) with the aboveground biomass produced, was higher in 3 mm and rainfed, with values from 0.40 to 0.43, being from 0.28 to 0.36 in 9 mm.

Table 5. Produced biomass (Kg DM ha⁻¹) and harvest index

	Aboveground Biomass Kg DM ha ⁻¹			Harvest index	
	Year 1	Year 2	Average 2 years	Year 1	Year 2
Rainfed	8521 c	5368 b	6945 c	0.41	0.40
3 mm	10740 bc	8979 ab	9860 bc	0.43	0.31
6 mm	14320 ab	12399 a	13359 ab	0.39	0.23
9 mm	16450 a	14755 a	15602 a	0.36	0.28



3.3. Water balance

The ETc adj was between 390 and 603 mm, with the lowest values in the rainfed. The 6- and 9-mm treatments presented similar ETc adj between each other and close to each year's ETc. Only the rainfed was affected by the low PP of Year 1, which occurred from flowering, CP and until the end of the crop cycle (Table 2), being lower than average for a 40-year series. This effect is clearly seen in the Ks value, both in the cycle average and in the CP (Table 6).

In Year 1, the 3 mm treatment had a Ks of 0.98 and an ETc adj similar to 6 and 9 mm, however, its grain and biomass yield was lower than in these treatments.

The net irrigation requirements were 423 and 416 mm in 9 mm to meet the total ETc of the crop. However, 6 mm required between 40 and 70 mm

less irrigation to meet the same objective, making better use of the PP.

Figure 1 shows the occurred PP during the crop cycle. Years 1 and 2 presented 20 and 38 PP events, respectively. On average, the total cumulative precipitation represents 49 and 69% of each year's ETc; however, not all PP was effective (Table 6).

The water content in the soil in 9 mm and 6 mm remained high, close to FC, not falling below the threshold of stomatal closure, while in rainfed as of approx. V10 stage, soil moisture fell below the threshold in the two years, and 3 mm remained close to the threshold in Year 1 and below it in Year 2 from R2 to R7 (Figure 2). This treatment did not maintain an adequate level of humidity in the soil when the water requirement increased, due to the higher demand and the scarce PP occurrence, and the soil RAW was depleted in approx. 17 days (Figure 2).

Table 6. Adjusted evapotranspiration (ETc Adj), Irrigation, Effective precipitation (PPeff.), average Stress coefficient of the cycle (Ks cycle), and Stress coefficient in CP (Ks CP)

Year 1 ETc: 569 mm PPt: 281 mm	ETc adj (mm)	Irriga- tion (mm)	PPeff. (mm)	Water Total	Ks cycle	Ks CP
Rainfed	404		268	268	0.71	0.56
3 mm	555	261	249	510	0.98	0.98
6 mm	566	368	183	551	0.99	1.00
9 mm	566	416	146	562	0.99	1.00
Year 2 ETc: 604 mm PPt: 421 mm						
Rainfed	390	0	338	338	0.72	0.47
3 mm	525	195	324	519	0.90	0.80
6 mm	601	353	275	628	1.00	1.00
9 mm	603	423	216	639	1.00	1.00



Figure 1. Daily and cumulative precipitation during the soybean growing season for the two years of evaluation

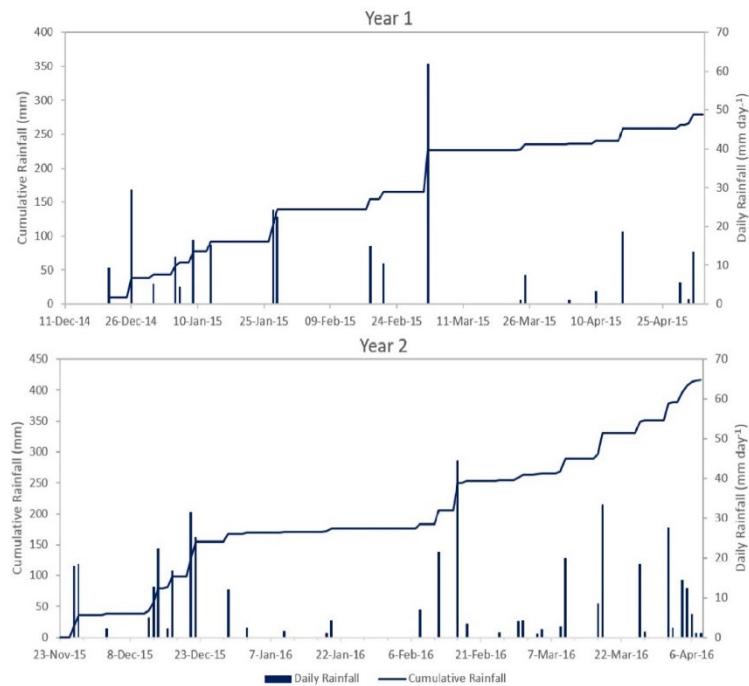
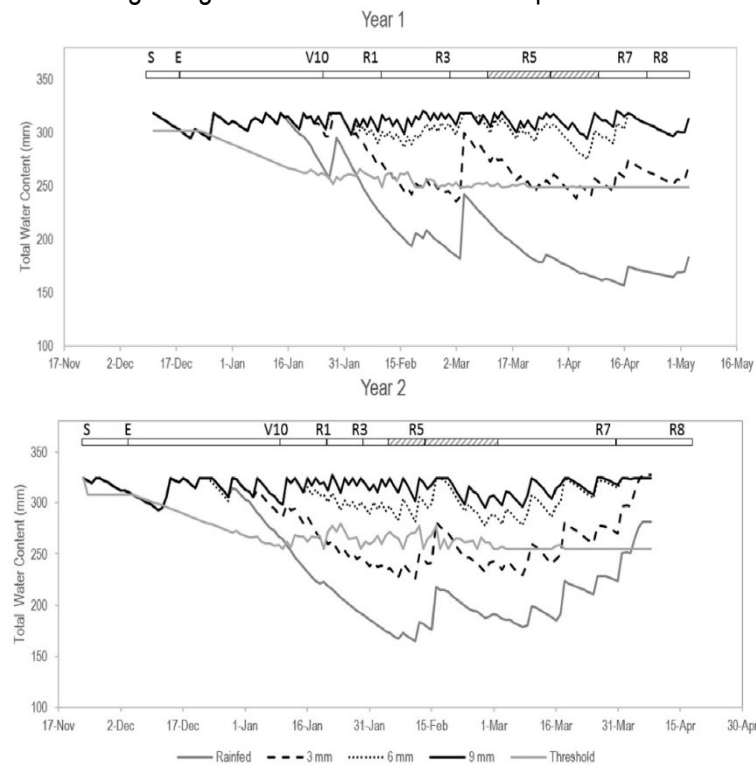


Figure 2. Evolution of the total water (mm) in the total root depth (0.80 m) for the different treatments. The upper-scale indicates the phenological stages and CP for each evaluation cycle (//). S: Sowing, E: Emergence, V10: 10th knot, R1: Beginning of the flowering, R3: Beginning of pod formation, R5: Seed formation, R7: Beginning of maturation and R8: Complete maturation





3.4. Relationships between yield, irrigation and ET. Water productivity indicators

Results indicate that the relationship between the yield and the irrigation applied was linear in the two years of evaluation and in the average of the years. The regression equations have a good fit with R^2 of 0.96 and 0.94 for Year 1, and the average and R^2 of 0.77 for Year 2. The linear regression coefficient, which indicates the increase in grain yield for each unit of increased irrigation applied, was 6.03 and 3.86 kg mm^{-1} for Years 1 and 2, respectively.

The water productivity evaluated using different indicators was higher in 9 and 6 mm, and higher in Year 1 compared to Year 2. In Year 1, the yields were higher and the amount of irrigation water was

similar in both years. Although Year 2 presented more abundant PP, the irrigation requirement was similar to Year 1, since half of the PP occurred at the end of the cycle. In Year 2, the rainfed, 3 mm and 6 mm treatments did not differ from each other in yield, but the 6 mm received more irrigation water, therefore, it had a worse performance. On average, each added mm of irrigation (IWUE) and each extra evapotranspired mm (WUE) produce more yield in 9 mm than in 3 and 6 mm.

The Deficit Irrigation Stress Index (DISI) was greater in the rainfed treatment, followed by the 3 mm. The index was greater in Year 2, which would indicate a greater level of stress in all deficit treatments.

Figure 3. Relation between grain yield (Yield) and irrigation applied (I) in the crop cycle. Year 1: $\text{Yield} = 6.025x + 3339$ ($R^2 = 0.96$); Year 2: $\text{Yield} = 3.8625x + 2041$ ($R^2 = 0.77$); 2 years: $\text{Yield} = 4.9521x + 2697$ ($R^2 = 0.94$)

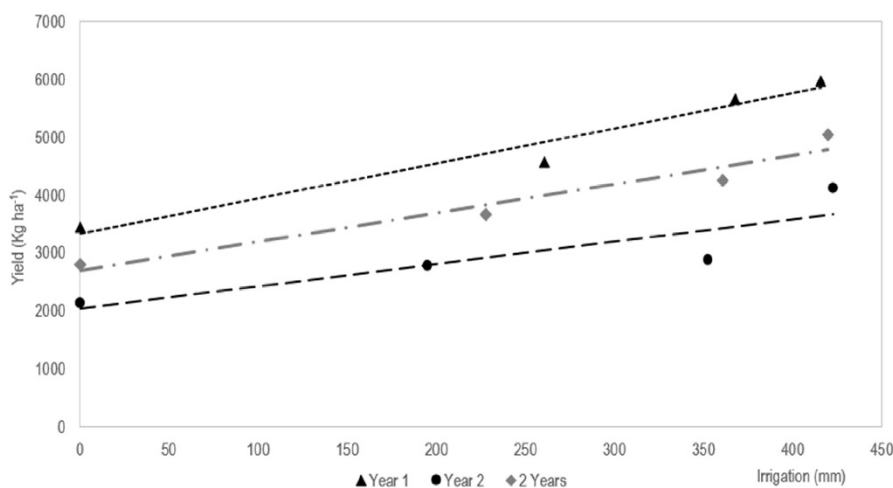


Table 7. Efficiency of the consumed water (CWUE), of the supplementary water use compared to rainfed (SWUE), of the irrigation water use (IWUE), and deficit irrigation stress index (DISI)

Treat.	CWUE (kg m^{-3})			SWUE (Kg m^{-3})			IWUE (Kg m^{-3})			DISI (tt^{-1})		
	Year 1	Year 2	2 years	Year 1	Year 2	2 years	Year 1	Year 2	2 years	Year 1	Year 2	2 years
Rainfed	0.85	0.55	0.70							42.2	48.1	44.6
3 mm	0.82	0.53	0.68	0.74	0.48	0.62	0.43	0.33	0.39	23.4	32.5	27.1
6 mm	1.00	0.48	0.73	1.36	0.35	0.79	0.60	0.21	0.41	5.4	30.0	15.4
9 mm	1.06	0.68	0.86	1.55	0.93	1.20	0.61	0.47	0.54			



4. Discussion

This experiment was developed under climatic conditions of atmospheric demand between 4 and 5% over the ET_0 value with 50% probability of occurrence considering the months of greater demand (January to March). The PP was below this value (22 and 30% lower during the same period). This situation generated water deficit conditions in the rainfed and 3 mm treatments in key stages for the yield formation, from the flowering to the final maturation of the crop⁽⁴⁰⁾⁽⁴¹⁾.

The daily average ET_c in the month of maximum demand for this experiment was 6.5 mm d^{-1} in February, which is similar to the average ET_c for a series of 40 years in January (6.6 mm). When using this value to design the irrigation equipment for soybean crops, such as central Pivot, whose application efficiency is around 85-90%⁽⁴²⁾, the irrigation water requirement rise to 7.6 mm d^{-1} . In this situation, equipment that is able to apply 7.6 mm d^{-1} meets the crop demands throughout the cycle. Nevertheless, this equipment requires a higher initial investment, greater operational cost, and it is oversized for the first and last stages of the crops cycle, when the water demand is at its lowest. The 6 mm treatment was able to maintain soil humidity levels over the threshold of stomata closure, applying 5.5 mm d^{-1} net (90% application efficiency). When the crop demand was greater, the soil reserve contributed with the difference between the crop demand and irrigation. The 6- and 9-mm irrigation treatments kept the soil moisture close to FC when reaching the stages of greatest water requirement and CP, keeping soil moisture levels above the stomata closure threshold.

The ET_c adj was higher as the crop received more water, the 6 mm and 9 mm treatments had no ET_c adjustment (566 and 603 mm, Year 1 and 2, respectively). The ET_c in this experiment is consistent with the values mentioned by regional and extra-regional researchers. According to Doorenbos and Kassam⁽⁴³⁾ the estimated ET_c for the maximum soybean production is between 450 and 700 mm; according to Steduto and others⁽⁴⁰⁾ between 300 and 800 mm, depending on the type of cultivar and environmental conditions. Montoya and Otero⁽⁴⁴⁾ estimated values of 380 mm in rainfed and approx.

580 mm with irrigation in 35 simulations carried out with the Aquacrop model⁽⁴¹⁾, using climatic data similar to the ones used in this experiment. Other researchers mention ET_c values of 821 mm in full irrigation in Bursa, Turkey⁽⁴⁵⁾; 452 mm in Nebraska, USA⁽⁴⁶⁾, also with irrigation; 505 mm with full irrigation, and 227 in rainfed in a temperate climate, Serbia⁽²⁾; 601 mm full irrigation and 452 mm in rainfed, in south-central Nebraska⁽¹⁾; 650 mm in full irrigation and 310 in rainfed, in Hungary⁽⁴⁷⁾.

Although the 3 mm treatment in Year 1 had an ET_c adj similar to that of 6 and 9 mm, the yield was significantly lower. In this case, the humidity level was above the stomata closure threshold, but below the leaf expansion threshold during the reproductive stages (Figure 2). This resulted in lower leaf area production, lower biomass and lower yield⁽⁴¹⁾.

The daily and cumulative PP was not enough to cover the water requirement of the crop in any of the 2 years. While 20 and 38 rainfall events occurred in Year 1 and Year 2, respectively, their distribution and volume were not adequate. In Year 2, up to V10, the PP covered the crop demand, after that, the PP was minimal and the increase in crop demand caused the rainfed to exhaust the RAW in 15 days, while 3 mm exhausted it in 25 days. Soils with less water storage capacity than the soil in this test would have had greater deficits. Uruguay has shallow soils in agricultural areas which present frequent water deficit conditions in summer⁽⁴⁸⁾. Considering a root depth of 0.80 m meant more available water for the crop to use during the cycle. The soil in which the experiment was developed, Typic Argiudoll, has 163 mm of potentially available water, at 1 m deep; however, due to degradation reasons (erosion), the net available water can decrease to 130 mm in this type of soil, classified as high class of available water⁽⁴⁸⁾. The experiment soil characterization indicates that the water available up to 0.80 m is 138 mm, higher than the indicated by the previous reference, considering the same depth, but no evidence of degradation due to erosion was found, which would explain the differences. This means that for the crop to begin its stomatic adjustment the AW must fall more than 60 mm, with a threshold of 0.44 ("p" adjusted for an ET_c of 6.5 mm d^{-1}), which occurs in 9 days with a daily demand of 6.5 mm , without irrigation.



Treatments 9 and 6 mm did not present significant differences in yield in Year 1, but they did in Year 2, where no differences were observed between these treatments in water consumption. In Year 2 the 6 mm yield was more affected by the plants overturned by the PP which occurred at the end of the cycle. This situation may explain the low harvest rates obtained in Year 2 in irrigated treatments.

The maximum yields were almost 6.0 t ha^{-1} , in 6- and 9-mm treatments (Year 1), similar to those obtained in local crop evaluations, and 3.4 t ha^{-1} in rainfed. At the commercial level, the average yields recorded are around 3.0 t ha^{-1} in rainfed and 4.0 t ha^{-1} with irrigation⁽²¹⁾. Gajić and others⁽²⁾ obtained yields of 4.27 t ha^{-1} with irrigation and 2.59 t ha^{-1} in rainfed, in temperate climate conditions. All irrigation treatments yielded more than rainfed, indicating the importance of irrigation even with low irrigation depth (3 mm).

The 9 mm treatment performed the best in the two years, in terms of yield and water productivity; however, it did not make good use of the PP, only 52% of them were effective. In the 6 mm treatment, the yield loss due to plant overturning explained the lower efficiency in the use of water.

The aboveground biomass production coincides with that mentioned locally by Giménez⁽⁴⁹⁾, but it is higher than the mentioned by other researchers⁽²⁾⁽⁴⁴⁾, mainly in the 6 and 9 mm treatments. The biomass in rainfed and 3 mm is similar to that mentioned by Galić and others⁽²⁾ in rainfed treatments and 40% of full irrigation. The 6- and 9-mm treatments kept the soil moisture close to FC, close to the leaf expansion threshold, avoiding the leaf expansion stress⁽⁴¹⁾⁽⁵⁰⁾, developing more biomass than 3 mm and rainfed. This higher biomass production did not translate into a proportional yield increase in 6 and 9 mm, and the HI was lower than rainfed and 3 mm. In this regard, Raes and others⁽⁴¹⁾ indicate that the HI can be negatively affected by this excessive biomass growth which does not mean a more harvestable yield.

The evolution of the total water in the root depth indicates adequate irrigation management since the humidity was kept between the threshold and FC, in most of the crop cycle, in 6 and 9 mm. This form of

irrigation management ensures high crop transpiration rates without stomata adjustment that reduces it and without affecting photosynthesis⁽⁴⁰⁾⁽³¹⁾. However, Steduto and others⁽⁴⁰⁾ recommend irrigation schedules based on the depletion of 60% of the total AW, that is, close to the threshold recommended by FAO 56 (50%), indicating that the applied irrigation is lower and the yield is not significantly affected. Although this practice allows greater use of PP, it can be risky in the absence of PP for prolonged periods and high-frequency irrigation equipment that cannot replenish the daily crop demand, when it is high, as is the case of central pivots and localized irrigation⁽⁴²⁾. These systems are designed using the average daily crop ET_c , so if the irrigation is managed to keep the humidity close to the threshold content, the soil moisture may fall below the stomata adjustment threshold in prolonged periods with demands above the average and without PP. These situations are frequent in temperate climates with erratic rainfall in the growth cycle. This situation was observed in this experiment during the CP in both evaluation years (Figure 1). Otero and others⁽⁵¹⁾ evaluated different irrigation strategies, including exhausting up to the threshold and restoring with 10 mm of irrigation, using the water balance model WInSareg⁽⁵²⁾. Results indicate that this strategy took better advantage of rainfall and made less use of irrigation water. However, the equipment designed to comply with this irrigation strategy must be able to manage 10 mm per day, and results in higher pumping flow and hydraulic design with larger diameter pipes, therefore higher investment and operating cost.

The water productivity indicators (CWUE, SWUE, IWUE) were similar to those mentioned by several researchers⁽¹⁾⁽²⁾⁽⁵³⁾ and higher than those indicated by Payero and others⁽⁵⁴⁾. The indicators that distinguish the role of irrigation in water productivity of the crop are the IWUE and SWUE⁽³⁷⁾⁽⁵⁵⁾⁽⁵⁶⁾⁽⁵⁷⁾, since they consider the incremental yield, above the rainfed yield caused by the added irrigation. Both indicators were higher in 9 mm, followed by 6 mm; however, in Year 1 the IWUE of both treatments was similar, with 48 mm less irrigation in the 6 mm treatment. In both years, the 6 mm treatment had the same ET_c as 9 mm, but with less irrigation water applied (48 and 70 mm, Year 1 and 2, respectively).



The relationships between yield and applied water were linear, coinciding with those obtained by Kirnak and others⁽¹¹⁾, Payero and others⁽⁵⁴⁾, and Irmak and others⁽¹⁾, who investigated in semi-humid climatic conditions in south-central Nebraska, with PP during the crop growth cycle. Regarding the yield increases per mm applied, Payero and others⁽⁵⁴⁾ obtained increases from 5.28 to 8.29 kg ha⁻¹ above the intercept in dry years, greater than those of this study, which were 6.02 and 3.86 kg ha⁻¹, Years 1 and 2, respectively. However, other researchers found a quadratic correlation between yield and ETc adj⁽²⁾⁽⁵⁸⁾.

In Year 1, the 6- and 9-mm treatments did not differ from each other, indicating that the equipment designed to apply a maximum irrigation depth of 6 mm would be the most convenient since it makes better use of PP and uses less irrigation water than the equipment with a maximum irrigation depth of 9 mm. However, the highest yield in Year 2 occurred with 9 mm, while the rest of the treatments did not differ from each other, possibly because 6 mm presented greater yield losses due to plant overturning.

5. Conclusions

The results of two years of evaluation indicate that the different irrigation regimes affect the yield and water productivity in soybean cultivation; even the smallest irrigation depth, 3 mm, had a positive effect on the yield compared to rainfed.

The 9 mm treatment was the best performing treatment in both years, but in Year 1 it did not differ significantly from the 6 mm. The 6 mm treatment in Year 2 had a lower yield, probably because it was the most affected by the harvest delay due to rainfall and the consequent grain loss. In the 6 mm treatment, the amount of irrigation water applied was lower and the use of rainwater was greater than in the 9 mm treatment, in both years.

To optimize irrigation management, an economic analysis is required. In this case, the proposed objective was to determine the minimum daily irrigation depth that allows high yields with better use of rainfall, and that ultimately determines lower equipment investment and operating costs. The lowest

costs are given by smaller equipment, associated with a smaller irrigation depth.

According to the results of this study, equipment designed with a capacity to replace a maximum of 6 mm per day would be the best option in Uruguay's soils, which have high and very high-water retention capacity, similar to the one in the present experiment. On the other hand, the 3-mm option must be economically analyzed to estimate whether the yield increase achieved by applying 6 mm justifies the higher investment and operating cost compared to applying 3 mm.

Therefore, it would be advisable to model the obtained results and evaluate them for a series of several years with measured climatic data to give a more reliable irrigation management recommendation, taking into account more diverse climatic and soil conditions than those observed in these two years of experiment.

Acknowledgments

The study was funded by the FSA_1_2013_1_12590 project of ANII (National Agency for Research and Innovation).

Author contribution statement

RH: experiment design, writing, analysis of results, statistical processing, interpretation of results. SD: contribution in writing and in the interpretation of results.

References

1. Irmak S, Specht JE, Odhiambo LO, Rees JM, Cassaman KG. Soybean yield, evapotranspiration, water productivity, and soil water extraction response to subsurface drip irrigation and Fertigation. *Trans ASABE* [Internet]. 2014 [cited 2021 Aug 30];57:729-48. Available from: <https://bit.ly/3t1MdMG>.



2. Gajić B, Kresović B, Tapanarova A, Životić L, Todorović M. Effect of irrigation regime on yield, harvest index and water productivity of soybean grown under different rainfall conditions in a temperate environment. *Agric Water Manag* [Internet]. 2018 [cited 2021 Aug 30];210:224-31. Available from: <https://bit.ly/3mLLPjZ>.
3. Montoya F, García C, Pintos F, Otero A. Effects of irrigation regime on the growth and yield of irrigated soybean in temperate humid climatic conditions. *Agric Water Manag* [Internet]. 2017 [cited 2021 Aug 30];193:30-45. Available from: <https://bit.ly/3zvadds>.
4. Scardigno A. New solutions to reduce water and energy consumption in crop production: a water energy food nexus perspective. *Curr Opin Environ Sci Health* [Internet]. 2020 [cited 2021 Aug 30];13:11-5. Available from: <https://bit.ly/38E4XbL>.
5. Izquier R. Uso eficiente del agua y la energía: modelos de diseño y gestión conjunta de sistemas de bombeo y balsas en redes colectivas en sistemas de riego [doctoral's thesis on Internet]. Albacete (ES): Universidad de Castilla La Mancha; 2015 [cited 2021 Aug 30]. 126p. Available from: <https://bit.ly/3yxFPOa>.
6. Djaman K, Irmak S, Rathje WR, Martín DL, Eisenhauer DE. Maize evapotranspiration, yield production functions, biomass, grain yield, harvest index, and yield response factors under full and limited irrigation. *Trans ASABE* [Internet]. 2013 [cited 2021 Aug 30];56:273-93. Available from: <https://bit.ly/3yrvEuv>.
7. Akcay S, Dagdelen N. Water use efficiency, yield and yield components of second crop sunflower under deficit irrigation. *Turk J Field Crops* [Internet]. 2016 [cited 2021 Aug 30];21:190-9. Available from: <https://bit.ly/3sYkj3Q>.
8. Fereres E, Soriano MA. Deficit irrigation for reducing agricultural water use. *J Exp Bot* [Internet]. 2007 [cited 2021 Aug 30];58:147-59. Available from: <https://bit.ly/3mJRrv7>.
9. Karam F, Masaad R, Sfeir T, Mounzer O, Rouphael Y. Evapotranspiration and seed yield of field grown soybean under deficit irrigation conditions. *Agric Water Manag* [Internet]. 2005 [cited 2021 Aug 30];75:226-44. Available from: <https://bit.ly/3Dxo5WP>.
10. Giménez L, Paredes P, Pereira LS. Water use and yield of soybean under various irrigation regimes and severe water stress: application of AquaCrop and SIMDualKc models. *Water* [Internet]. 2017 [cited 2021 Aug 30];9(6):393. Available from: <https://bit.ly/3gGruZx>.
11. Kirnak H, Dogan E, Turkoglu H. Effect of drip irrigation intensity on soybean seed yield and quality in the semi-arid Harran plain, Turkey. *Span J Agric Res* [Internet]. 2010 [cited 2021 Aug 30];8(4):1208-17. Available from: <https://bit.ly/3Dwzjer>.
12. Torrion J, Setiyono T, George L, Graef G, Kenneth G, Cassman K, Irmak S, Specht J. Soybean irrigation management: agronomic impacts of deferred, deficit, and full-season strategies. *Crop Sci* [Internet]. 2014 [cited 2021 Aug 30];54(6):2782-95. Available from: <https://bit.ly/2WA4BQq>.
13. Capurro MC, Beretta A, Sawchik J, Puppo L. Rendimiento de la soja en respuesta a distintas dosis y momentos de riego. *Agrociencia Uruguay*. 2017;21(2):65-76.
14. Silva V de PR, Silva RA, Maciel GF, Braga CC, Silva Junior JLC da, Souza EP de, Rodrigues RS, Silva MT, Holanda RM de. Calibration and validation of the AquaCrop model for the soybean crop grown under different levels of irrigation in Motopiba region, Brazil. *Cienc Rural* [Internet]. 2018 [cited 2021 Aug 30];48:1-8. Available from: <https://bit.ly/2Wxa7TW>.
15. Silva V de PR, Silva RA, Maciel GF, Souza EP de, Braga CC, Holanda RM de. Soybean yield in the Matopiba region under climate changes. *Rev Bras de Eng Agríc e Ambient* [Internet]. 2020 [cited 2021 Aug 30];24(1):8-14. Available from: <https://bit.ly/2WCUXwj>.



16. Puppo L, García-Petillo M. Determinación de la evapotranspiración del cultivo de referencia (ET_o) para el diseño de equipos de riego en el Uruguay. *Agrociencia Uruguay*. 2015;19(1):122-30.
17. Sawchik J, Ceretta S. Consumo de agua por sojas de distinto grupo de madurez en diferentes ambientes de producción. In: *Jornada Técnica de cultivos: trabajos presentados*. Montevideo: INIA; 2005. p. 41-5. (Actividades de Difusión; 417).
18. Ministerio de Ganadería, Agricultura y Pesca, DIEA (UY). Encuesta agrícola: invierno 2016 [Internet]. Montevideo: MGAP; 2016 [cited 2021 Aug 30]. 21p. (Serie encuestas; 337). Available from: <https://bit.ly/3i2rEvB>.
19. Ministerio de Ganadería, Agricultura y Pesca, DIEA (UY). Encuesta agrícola: invierno 2017 [Internet]. Montevideo: MGAP; 2017 [cited 2021 Aug 30]. 26p. (Serie encuestas; 348). Available from: <https://bit.ly/3DtX8TU>.
20. Ministerio de Ganadería, Agricultura y Pesca, DIEA (UY). Encuesta agrícola: invierno 2018 [Internet]. Montevideo: MGAP; 2018 [cited 2021 Aug 30]. 36p. (Serie encuestas; 353). Available from: <https://bit.ly/3mMj07c>.
21. Ministerio de Ganadería, Agricultura y Pesca, DIEA (UY). Encuesta agrícola: invierno 2019 [Internet]. Montevideo: MGAP; 2019 [cited 2021 Aug 30]. 28p. (Serie encuestas; 358). Available from: <https://bit.ly/3jusWjS>.
22. Ministerio de Ganadería, Agricultura y Pesca, DIEA (UY). Encuesta agrícola: invierno 2020 [Internet]. Montevideo: MGAP; 2020 [cited 2021 Aug 30]. 23p. (Serie encuestas; 362). Available from: <https://bit.ly/3mLqHkI>.
23. Grassini P, Torrión JA, Yang HS, Rees J, Andersen D, Cassman KG, Specht JE. Soy-bean yield gaps and water productivity in the western U.S. Corn Belt. *Field Crops Res* [Internet]. 2015 [cited 2021 Aug 30];179:150-63. Available from: <https://bit.ly/2WAQ3jq>.
24. Corsi W. Programación del riego con informes de evaporación. In: *Manejo de la información agroclimática para apoyo a la toma de decisiones en riego*. Montevideo: INIA; 1994. p. 1-16. (Serie de actividades de difusión; 26).
25. Giménez L, García-Petillo M. Evapotranspiración de cultivos de verano para dos regiones climáticamente contrastantes de Uruguay. *Agrociencia Uruguay*. 2011;15(2):100-8.
26. Soil Survey Staff. *Keys to Soil Taxonomy* [Internet]. 12th ed. Washington: USDA; 2014 [cited 2021 Aug 30]. 360p. Available from: <https://bit.ly/38r9cXK>.
27. Ministerio de Agricultura y Pesca, Dirección de Suelos y Fertilizantes (UY). *Carta de Reconocimiento de Suelos del Uruguay*. Vol 3, Descripción de las Unidades de Suelos. Montevideo: MAP; 1979. 452p.
28. Dardanelli J, Severina I, Andriani J. Funcionalidad de raíces y agua del subsuelo: su rol en la optimización del riego suplementario. In: *Potencial del riego extensivo en cultivos y pasturas*. Montevideo: INIA; 2010. p. 19-28.
29. Lindemann T, Plata V, Oyhançabal W, Sancho D. La percepción de productores y técnicos agropecuarios. In: *Clima de cambios: nuevos desafíos de adaptación para Uruguay* [Internet]. Vol. 2, La percepción de productores y técnicos agropecuarios. [place unknown]: FAO; 2013 [cited 2021 Aug 30]. 93p. Available from: <https://bit.ly/3sWLFb4>.
30. Merriam J, Keller J. *Farm irrigation system evaluation: a guide for management*. Logan: Utah State University; 1978. 271p.
31. Allen RG, Pereira LS, Raes D, Smith M. *Crop evapotranspiration: guidelines for computing crop water requirements*. Rome: FAO; 1998. 322p. (FAO Irrigation and Drainage; 56).
32. Haverkamp R, Vauclin M, Vachaud G. Error analysis in estimating soil water content from neutron probe measurements: 1. Local standpoint. *Soil Sci*. 1984;137:78-90.
33. Puppo L, García C, Girona J, García-Petillo M. Determination of Young olive tree water consumption with drainage Lysimeters. *J Water Resour Prot* [Internet]. 2014 [cited 2021 Aug 30];6(9):841-51. Available from: <https://bit.ly/3gHbeb2>.



34. Fehr W, Caviness C, Burmood D, Pennington J. Stage of development descriptions for soybeans, *Glycine max* (L.) Merrill. *Crop Sci.* 1971;2:929-32.
35. Fehr W, Caviness C. Stages of soybean development. Ames (IA): Iowa State University; 1977. 11p. (Special Report; 87).
36. Rudnick D, Irmak S, West C, Chavez J, Kisekka I, Marek T, Schneekloth J, Mitchell Mcallister D, Sharma V, Djaman K, Aguilar J, Schipanski ME, Rogers DH, Schlegel A. Deficit irrigation management of maize in the High Aquifer Region: a review. *J Am Water Resour Assoc* [Internet]. 2019 [cited 2021 Aug 30];55(1):38-55. Available from: <https://bit.ly/3gMgPN7>.
37. Howell TA. Enhancing water use efficiency in irrigated agriculture. *Agron J* [Internet]. 2001 [cited 2021 Aug 30];93(2):281-9. Available from: <https://bit.ly/3DwG28b>.
38. Pandey R, Maranville JW, Chetima MY. Deficit irrigation and nitrogen effects on maize in a sahelian environment: shoot growth, nitrogen uptake and water extraction. *Agric Water Manag.* 2000;46:15-27.
39. Di Rienzo JA, Casanoves F, Balzarini MG, González L, Tablada M, Robledo CW. *InfoStat* [Internet]. Version 2011. Córdoba: Universidad Nacional de Córdoba, Facultad de Ciencias Agropecuarias; 2014 [cited 2021 Aug 30]. Available from: <https://bit.ly/3dDvlyu>.
40. Steduto P, Hsiao TC, Fereres E, Raes D. *Crop yield response to water*. Rome: FAO; 2012. 500p. (Irrigation and drainage; 66).
41. Raes D, Steduto P, Hsiao TC, Fereres E. *AquaCrop Plug-in program: reference manual* [Internet]. Version 4.0. Rome: FAO; 2013 [cited 2021 Aug 30]. 14p. Available from: <https://bit.ly/3zvXK99>.
42. Tarjuelo JM. *El riego por aspersión y su tecnología*. 3 ed. Madrid: Mundi prensa; 2005. 591p.
43. Doorembos J, Kassam H. *Yield response to water*. Rome: FAO; 1979. 193p. (FAO Irrigation and Drainage; 64).
44. Montoya F, Otero A. Is Irrigating Soybean Profitable In Uruguay? A Modeling Approach. *Agron J* [Internet]. 2019 [cited 2021 Aug 30];111(2):749-63. Available from: <https://bit.ly/2WBucsE>.
45. Sincik M, Candogan B, Demirtas C, Buyucangaz H, Yazgan S, Goksoy A. Deficit irrigation of soybean [*Glycine max* (L.) Merr.] in a sub-humid climate. *J Agron Crop Sci* [Internet]. 2008 [cited 2021 Aug 30];194:200-5. Available from: <https://bit.ly/2YbouOD>.
46. Suyker A, Verma S. Evapotranspiration of irrigated and rainfed maize–soybean cropping systems. *Agric For Meteorol* [Internet]. 2009 [cited 2021 Aug 30];149:443-52. Available from: <https://bit.ly/3ztmFu4>.
47. Anda A, Simón B, Soós G, Texeira da Silva J, Kucserka T. Crop-water relation and production of two soybean varieties under different water supplies. *Theor Appl Climatol* [Internet]. 2019 [cited 2021 Aug 30];137:1515-28. Available from: <https://bit.ly/3yzLiUU>.
48. Molfino JH, Califra A. *Agua disponible de las Tierras del Uruguay: 2da. Aproximación* [Internet]. 2001 [cited 2021 Aug 30]. 13p. Available from: <https://bit.ly/3DtUJsm>.
49. Giménez L. Respuesta del maíz y la soja a diferentes disponibilidades hídricas en distintas etapas de desarrollo. *Agrociencia Uruguay* [Internet]. 2017 [cited 2021 Aug 30];21(2):77-90. Available from: <https://bit.ly/3jswS4n>.
50. Steduto P, Hsiao T, Raes D, Fereres E. *AquaCrop: the FAO crop model to simulate yield response to water: I. Concepts and underlying principles*. *Agron J* [Internet]. 2009 [cited 2021 Aug 30];101(3):426-37. Available from: <https://bit.ly/3kAyqc2>.
51. Otero A, Montoya F, García C. *Programación del riego*. Montevideo: INIA; 2017. 68p. (Serie Técnica; 232).
52. Pereira LS, Teodoro PR, Rodrigues PN, Texeira JL. Irrigation scheduling simulation: the model ISAREG. In: *Tools for Drought Mitigation in Mediterranean Regions*. Dordrecht: Kluwer; 2003. p. 161-80.



53. Alfonso C, Barbieri P, Hernández M, Lewczuk NA, Martínez JP, Echarte MM, Echarte L. Water productivity in soybean following a cover crop in a humid environment. *Agric Water Manag* [Internet]. 2020 [cited 2021 Aug 30];232:106045. Available from: <https://bit.ly/3Bs2zRF>.
54. Payero JO, Tarkalson DD, Irmak S, Davison D, Petersen JL. Effect of timing of a deficit irrigation allocation on corn evapotranspiration, yield, water use efficiency, and dry mass. *Agric Water Manag* [Internet]. 2009 [cited 2021 Aug 30];96(10):1387-97. Available from: <https://bit.ly/3t3Zjc4>.
55. Viets FG. Fertilizers and the efficient use of water. *Adv Agron*. 1962;14:223-64.
56. Bos MG. Irrigation efficiencies at crop production level. *ICID Bull*. 1980;29(2):18-25.
57. Djaman K, Irmak S. Soil water extraction patterns and crop, irrigation, and evapotranspiration water use efficiency of maize under full and limited irrigation and rainfed settings. *Trans ASABE* [Internet]. 2012 [cited 2021 Aug 30];55(4):1223-38. Available from: <https://bit.ly/38sL47c>.
58. Demirtas C, Yazgan S, Candogan BN, Sincik M, Buyukcangaz H, Goksoy AT. Quality and yield response of soybean (*Glycine max* L. Merrill) to drought stress in sub-humid environment. *Afr J Biotechnol* [Internet]. 2010 [cited 2021 Aug 30];9:6873-81. Available from: <https://bit.ly/3kFc2ON>.